



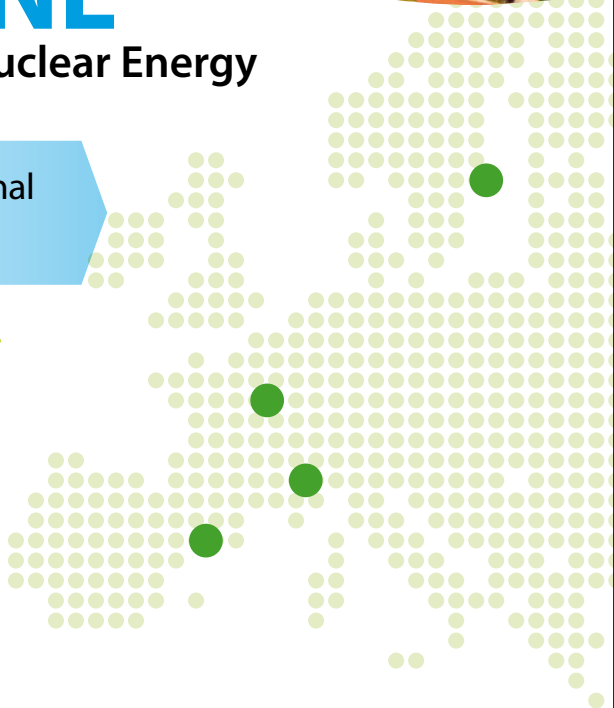
MSc EMINE

European Master in Nuclear Energy

Broader scope than traditional nuclear education

Very strong participation of industry partners

Very good employment opportunities





MSc EMINE offers outstanding technical training and addresses the economic, social and political issues of nuclear energy, broadening the scope of traditional nuclear education.

Broader scope than traditional nuclear education

Students in our programme benefit from the involvement of our industrial partners in the form of lecturers from industry, one week in-house training at key research centres, and activities such as 'PIMS' projects, where students work on the business plans of KIC InnoEnergy start-ups. During the 3-week summer school at GEM, you learn about innovation issues in energy markets.

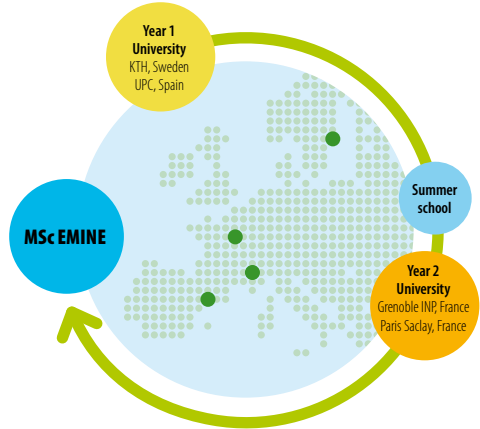
Very good employment opportunities

The European nuclear industry is a big job creator in the low-carbon energy mix. Based on the EU Energy Roadmap 2050 (where nuclear contributes nearly 20% of this mix by 2050), the industry will create 347,000 additional jobs in Europe from lifetime extension, new build, decommissioning and geological disposal programmes over and above the 900,000 jobs created by regular operation.



Second year specialisations

- Materials Science for Nuclear Energy
- Nuclear Reactor Physics and Engineering
- Nuclear Plant Design
- Operations
- Fuel Cycle
- Decommissioning and Waste Management.



*University for first and second year must be different.



Very strong participation of industry partners

The uniqueness of EMINE lies in the involvement of its industrial partners. Four major players in nuclear energy – AREVA, EDF, ENDESA and Vattenfall – take active part in the Master programme. The CEA is also actively involved, thus contributing its expertise as one of the most important research centres in nuclear energy in Europe.



KIC InnoEnergy Master School



*Grenoble Institute of
Technology, France*



*Royal Institute of
Technology, Sweden*



*University of Paris-Saclay
France*



*Universitat Politècnica de
Catalunya, Spain*



*Grenoble Ecole de
Management, France*

Application details

Programme specific requirements.

A completed Bachelor's degree in Physics, Mechanical Engineering, Nuclear Engineering, Chemical Engineering, Electrical Engineering, Energy Engineering.

Applicants with other Bachelor degrees that include fundamentals in mathematics, physics and mechanics will be considered by the EMINE consortium on a case-by-case basis.

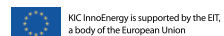
Accreditation

Having successfully completed the programme (120 ECTS), you will be awarded the Master of Science (MSc) as a double-degree from the two universities you have attended.

Find out more on our website

Application dates and student testimonials

www.kic-innoenergy.com/emine



KIC InnoEnergy is supported by the EIT,
a body of the European Union